

\$275,000 - 146 10121 80 Avenue, Edmonton

MLS® #E4453630

\$275,000

2 Bedroom, 2.00 Bathroom, 973 sqft

Condo / Townhouse on 0.00 Acres

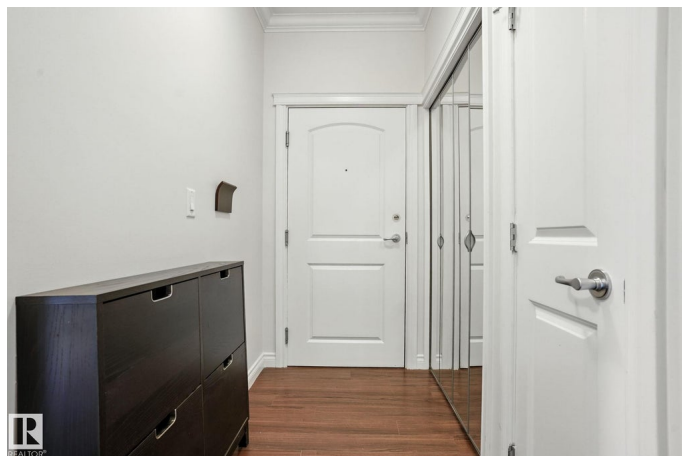
Ritchie, Edmonton, AB

Welcome to Scona Gardens. This home offers nearly 1,000 square feet of living space with 2 bedrooms, 2 bathrooms, and 2 underground parking stalls with secure storage. With brand new carpets, fresh paint, premium Hunter Douglas blinds, and central air conditioning, it's move-in ready! The open layout includes a stylish kitchen, a dedicated dining area, a spacious living room, and plenty of windows that fill the home with natural light. The massive primary bedroom features a private ensuite, while in-suite laundry with extra storage adds everyday convenience. Building amenities include a fitness centre, guest suites, a car wash, and plenty of underground visitor parking. Just steps off Whyte Avenue, you'll be surrounded by coffee shops, restaurants, boutiques, and nightlife. With the University of Alberta and downtown only minutes away, it's a prime location for students, investors, or anyone wanting to stay close to the action.

Built in 2006

Essential Information

MLS® #	E4453630
Price	\$275,000
Bedrooms	2
Bathrooms	2.00



Full Baths	2
Square Footage	973
Acres	0.00
Year Built	2006
Type	Condo / Townhouse
Sub-Type	Lowrise Apartment
Style	Single Level Apartment
Status	Active

Community Information

Address	146 10121 80 Avenue
Area	Edmonton
Subdivision	Ritchie
City	Edmonton
County	ALBERTA
Province	AB
Postal Code	T6E 0B9

Amenities

Amenities	Air Conditioner, Car Wash, Exercise Room, Guest Suite, Parking-Extra, Parking-Visitor, Security Door, Storage-In-Suite, Storage Cage
Parking Spaces	2
Parking	Double Indoor, Heated, Underground

Interior

Interior Features	ensuite bathroom
Appliances	Air Conditioning-Central, Dishwasher-Built-In, Fan-Ceiling, Microwave Hood Fan, Refrigerator, Stacked Washer/Dryer, Stove-Electric, Window Coverings
Heating	Fan Coil, Natural Gas
# of Stories	4
Stories	1
Has Basement	Yes
Basement	None, No Basement

Exterior

Exterior	Wood, Stone, Stucco, Vinyl
Exterior Features	Schools, Shopping Nearby, See Remarks
Roof	Asphalt Shingles

Construction	Wood, Stone, Stucco, Vinyl
Foundation	Concrete Perimeter

Additional Information

Date Listed	August 19th, 2025
Days on Market	1
Zoning	Zone 17
Condo Fee	\$679

DATA IS DEEMED RELIABLE BUT IS NOT GUARANTEED ACCURATE BY THE REALTORS® ASSOCIATION OF EDMONTON. COPYRIGHT 2025 BY THE REALTORS® ASSOCIATION OF EDMONTON. ALL RIGHTS RESERVED.Trademarks are owned or controlled by the Canadian Real Estate Association (CREA) and identify real estate professionals who are members of CREA (REALTOR®, REALTORS®) and/or the quality of services they provide (MLS®, Multiple Listing Service®)

Listing information last updated on August 20th, 2025 at 8:47am MDT