

Courtesy Of David C St. Jean Of Exp Realty

\$739,250 - 1519 26 Street, Edmonton

MLS® #E4450382

\$739,250

5 Bedroom, 4.00 Bathroom, 2,357 sqft
Single Family on 0.00 Acres

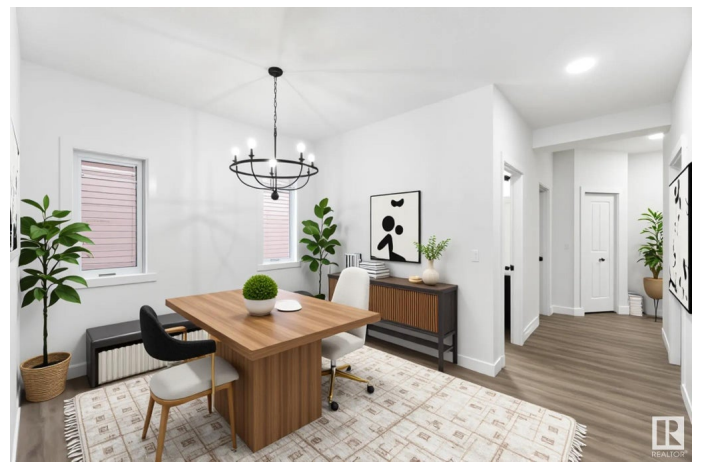
Laurel, Edmonton, AB

The Atlas offers 2,357 sq ft of well-designed living space on a walkout lot. This Evolve model features a double attached garage, 9'™ ceilings on the main and lower levels, and Luxury Vinyl Plank flooring. The main floor includes a bedroom, full 3-piece bath with walk-in shower, mudroom, and an open-concept kitchen, nook, and Great Room. The kitchen features a spice kitchen, quartz countertops, Silgranit sink, island with eating ledge, full-height backsplash, and soft-close cabinets with crown moulding for a refined touch. Upstairs, enjoy two spacious primary suites—each with walk-in closets and private ensuites—plus a bright bonus room, full laundry room, main 3-piece bath, and two additional bedrooms. Large windows throughout provide abundant natural light. Additional features include a garden door, matte black finishes, upgraded railings and trim, full appliance package, basement rough-ins, and extra side windows on every level—enhancing comfort, style, and livability.

Built in 2025

Essential Information

MLS® #	E4450382
Price	\$739,250
Bedrooms	5



Bathrooms	4.00
Full Baths	4
Square Footage	2,357
Acres	0.00
Year Built	2025
Type	Single Family
Sub-Type	Detached Single Family
Style	2 Storey
Status	Active

Community Information

Address	1519 26 Street
Area	Edmonton
Subdivision	Laurel
City	Edmonton
County	ALBERTA
Province	AB
Postal Code	T6T 2T7

Amenities

Amenities	On Street Parking, Detectors Smoke, No Animal Home, No Smoking Home, Smart/Program. Thermostat
Parking	Double Garage Attached

Interior

Interior Features	ensuite bathroom
Appliances	Dishwasher-Built-In, Dryer, Garage Control, Garage Opener, Refrigerator, Stove-Electric, Washer
Heating	Forced Air-1, Natural Gas
Fireplace	Yes
Fireplaces	Tile Surround
Stories	2
Has Basement	Yes
Basement	Full, Unfinished

Exterior

Exterior	Wood, Stone, Vinyl
Exterior Features	Flat Site, No Back Lane, No Through Road, Playground Nearby, Public Transportation, Schools, Shopping Nearby

Roof	Asphalt Shingles
Construction	Wood, Stone, Vinyl
Foundation	Concrete Perimeter

School Information

Elementary	Svend Hansen School
Middle	Svend Hansen School
High	Elder Dr. Francis Whiskeyj

Additional Information

Date Listed	July 30th, 2025
Days on Market	22
Zoning	Zone 30

DATA IS DEEMED RELIABLE BUT IS NOT GUARANTEED ACCURATE BY THE REALTORS® ASSOCIATION OF EDMONTON. COPYRIGHT 2025 BY THE REALTORS® ASSOCIATION OF EDMONTON. ALL RIGHTS RESERVED. Trademarks are owned or controlled by the Canadian Real Estate Association (CREA) and identify real estate professionals who are members of CREA (REALTOR®, REALTORS®) and/or the quality of services they provide (MLS®, Multiple Listing Service®)

Listing information last updated on August 20th, 2025 at 10:32pm MDT