

\$120,000 - 401 1624 48 Street, Edmonton

MLS® #E4442474

\$120,000

2 Bedroom, 1.00 Bathroom, 872 sqft

Condo / Townhouse on 0.00 Acres

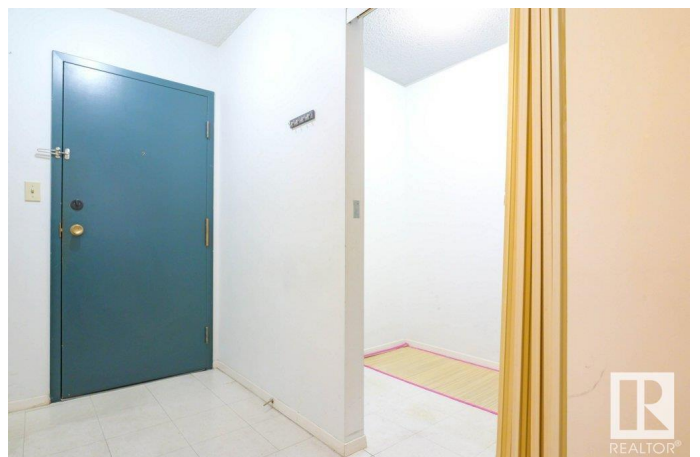
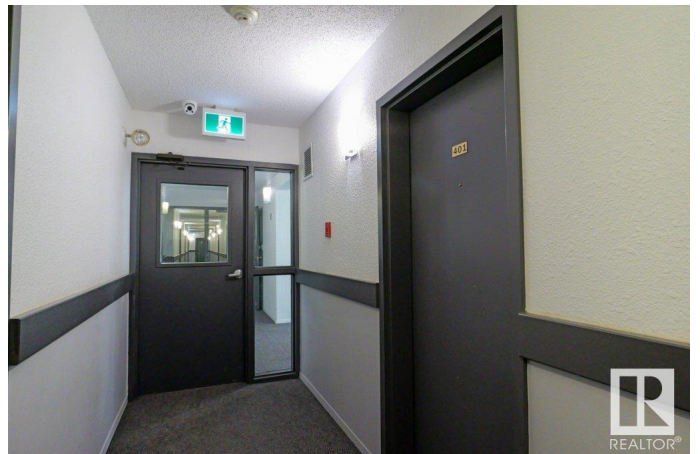
Pollard Meadows, Edmonton, AB

Perfect investment property or first-time home! This top-floor 18+ condo features 2 large bedrooms, including one with a spacious walk-in closet. The open living and dining areas offer plenty of space, and the screened-in deck is perfect for relaxation. The building has an elevator for added convenience. Located just minutes from Millwood's Town Centre, and other shopping and grocery options. This condo includes an extra-long parking spot that fits 2 cars, with transit service nearby and a Gurudwara within walking distance. A fantastic opportunity in a prime location!

Built in 1981

Essential Information

| | |
|----------------|------------------------|
| MLS® # | E4442474 |
| Price | \$120,000 |
| Bedrooms | 2 |
| Bathrooms | 1.00 |
| Full Baths | 1 |
| Square Footage | 872 |
| Acres | 0.00 |
| Year Built | 1981 |
| Type | Condo / Townhouse |
| Sub-Type | Lowrise Apartment |
| Style | Single Level Apartment |



Status Active

Community Information

Address 401 1624 48 Street
Area Edmonton
Subdivision Pollard Meadows
City Edmonton
County ALBERTA
Province AB
Postal Code T6L 5P1

Amenities

Amenities No Animal Home, See Remarks
Parking Stall

Interior

Appliances Dishwasher-Built-In, Refrigerator, Stove-Electric
Heating Baseboard, Natural Gas
of Stories 4
Stories 1
Has Basement Yes
Basement None, No Basement

Exterior

Exterior Wood, Stucco
Exterior Features Public Transportation, Schools, See Remarks
Roof Asphalt Shingles
Construction Wood, Stucco
Foundation Concrete Perimeter

Additional Information

Date Listed June 14th, 2025
Days on Market 67
Zoning Zone 29
Condo Fee \$506

DATA IS DEEMED RELIABLE BUT IS NOT GUARANTEED ACCURATE BY THE REALTORS® ASSOCIATION OF EDMONTON. COPYRIGHT 2025 BY THE REALTORS® ASSOCIATION OF EDMONTON. ALL RIGHTS RESERVED. Trademarks are owned or controlled by the Canadian Real Estate Association (CREA) and identify real estate professionals who are members of CREA (REALTOR®, REALTORS®) and/or the quality of services they provide (MLS®, Multiple Listing Service®)

Listing information last updated on August 20th, 2025 at 4:02pm MDT