

## \$419,900 - 72 Greenbury Crescent, Spruce Grove

MLS® #E4442209

**\$419,900**

3 Bedroom, 2.50 Bathroom, 1,405 sqft

Single Family on 0.00 Acres

Greenbury, Spruce Grove, AB

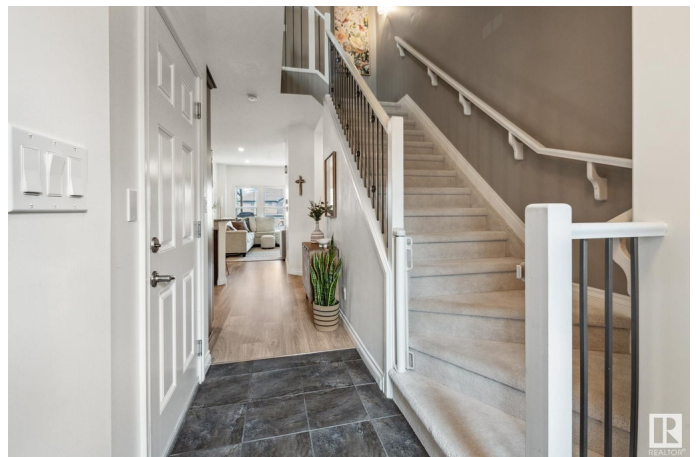
STUNNING- fully finished 1405 Sq ft 2 storey 1/2 duplex in sought after Greenbury backing onto a walking path that leads to Jubilee Park. Open concept plan with Chefs dream kitchen, Granite Counter Tops, Large functional Island with loads of cabinetry & corner pantry. Gorgeous great room features large windows allowing in tons of natural light & Gas F/P. Nice sized Dining area has patio doors that lead to an amazing deck with a custom built Pergola & Privacy wall. Entire Main level also has 9 ft ceilings & encompasses Laminate flooring. Upstairs is the Primary Suite with 3 pce ensuite & walk in closet. 2 Additional bedrooms, 4 pce bath & separate Laundry Room. Fully finished basement is complete with a large Rec room which provides an additional 556 sq ft of living space. great for the growing family!!! Single attached garage & a fully landscaped & fence back yard also adds to the value of this Gem of a home. Almost forgot- Central A/C for those hot Summer Nights. Shows a 10/10 & priced to Sell..

Built in 2012

### Essential Information

MLS® # E4442209

Price \$419,900



Bedrooms	3
Bathrooms	2.50
Full Baths	2
Half Baths	1
Square Footage	1,405
Acres	0.00
Year Built	2012
Type	Single Family
Sub-Type	Half Duplex
Style	2 Storey
Status	Active

### Community Information

Address	72 Greenbury Crescent
Area	Spruce Grove
Subdivision	Greenbury
City	Spruce Grove
County	ALBERTA
Province	AB
Postal Code	T7X 0L9

### Amenities

Amenities	See Remarks
Parking	Single Garage Attached

### Interior

Interior Features	ensuite bathroom
Appliances	Air Conditioning-Central, Dishwasher-Built-In, Garage Control, Garage Opener, Microwave Hood Fan, Refrigerator, Stove-Electric, Water Softener, Window Coverings
Heating	Forced Air-1, Natural Gas
Stories	3
Has Basement	Yes
Basement	Full, Finished

### Exterior

Exterior	Wood, Stone, Vinyl
Exterior Features	Fenced, Golf Nearby, Landscaped, Playground Nearby, Schools
Roof	Asphalt Shingles

Construction	Wood, Stone, Vinyl
Foundation	Concrete Perimeter

**Additional Information**

Date Listed	June 12th, 2025
Days on Market	5
Zoning	Zone 91

DATA IS DEEMED RELIABLE BUT IS NOT GUARANTEED ACCURATE BY THE REALTORS® ASSOCIATION OF EDMONTON. COPYRIGHT 2025 BY THE REALTORS® ASSOCIATION OF EDMONTON. ALL RIGHTS RESERVED.Trademarks are owned or controlled by the Canadian Real Estate Association (CREA) and identify real estate professionals who are members of CREA (REALTOR®, REALTORS®) and/or the quality of services they provide (MLS®, Multiple Listing Service®)

Listing information last updated on June 17th, 2025 at 2:17am MDT