

## \$489,900 - 1186 Westerra Link, Stony Plain

MLS® #E4442094

**\$489,900**

3 Bedroom, 2.50 Bathroom, 2,195 sqft

Single Family on 0.00 Acres

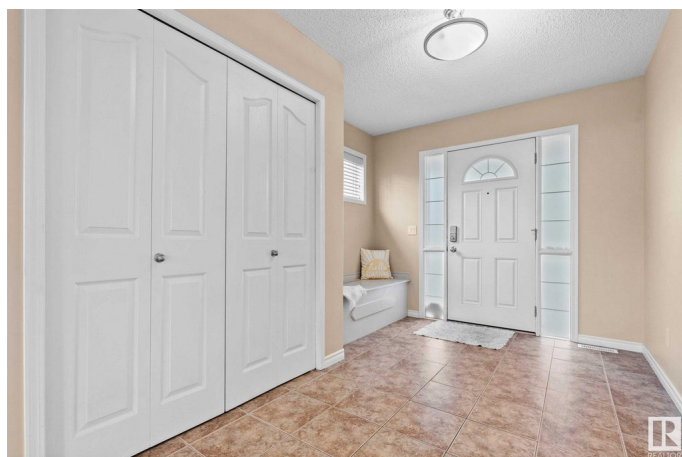
Westerra, Stony Plain, AB

Welcome to Westerra! This home offers 3 bedrooms and 2.5 bathrooms, making it a perfect family home! Close to schools for the kids, tucked on a quiet street, with a great backyard! The main floor has an open concept with hardwood flooring. The main floor includes laundry room and lots of closet space, with easy access to the attached garage. The family will love the bonus room, which offers versatility and can be utilized as a home office, playroom, or entertainment area. The primary suite is massive and easily fits a king, with walk-in closet and ensuite. This home is move-in ready for the family! Don't miss out on this one!

Built in 2006

### Essential Information

MLS® #	E4442094
Price	\$489,900
Bedrooms	3
Bathrooms	2.50
Full Baths	2
Half Baths	1
Square Footage	2,195
Acres	0.00
Year Built	2006
Type	Single Family



Sub-Type	Detached Single Family
Style	2 Storey
Status	Active

### Community Information

Address	1186 Westerra Link
Area	Stony Plain
Subdivision	Westerra
City	Stony Plain
County	ALBERTA
Province	AB
Postal Code	T7Z 2Z4

### Amenities

Amenities	Air Conditioner, Deck
Parking Spaces	4
Parking	Double Garage Attached

### Interior

Interior Features	ensuite bathroom
Appliances	Air Conditioning-Central, Dishwasher-Built-In, Dryer, Hood Fan, Refrigerator, Stove-Electric, Washer, Window Coverings, See Remarks
Heating	Forced Air-1, Natural Gas
Fireplace	Yes
Fireplaces	Mantel
Stories	2
Has Basement	Yes
Basement	Full, Unfinished

### Exterior

Exterior	Wood, Stone, Vinyl
Exterior Features	Backs Onto Park/Trees, Fenced, Golf Nearby, No Back Lane, Schools
Roof	Asphalt Shingles
Construction	Wood, Stone, Vinyl
Foundation	Concrete Perimeter

### Additional Information

Date Listed	June 12th, 2025
Days on Market	4

## Zoning

## Zone 91

DATA IS DEEMED RELIABLE BUT IS NOT GUARANTEED ACCURATE BY THE REALTORS® ASSOCIATION OF EDMONTON. COPYRIGHT 2025 BY THE REALTORS® ASSOCIATION OF EDMONTON. ALL RIGHTS RESERVED. Trademarks are owned or controlled by the Canadian Real Estate Association (CREA) and identify real estate professionals who are members of CREA (REALTOR®, REALTORS®) and/or the quality of services they provide (MLS®, Multiple Listing Service®)

Listing information last updated on June 16th, 2025 at 3:17pm MDT