

\$785,000 - 51110 Rge Road 212, Rural Strathcona County

MLS® #E4441188

\$785,000

4 Bedroom, 3.00 Bathroom, 1,411 sqft

Rural on 3.09 Acres

Keding Estates, Rural Strathcona County, AB

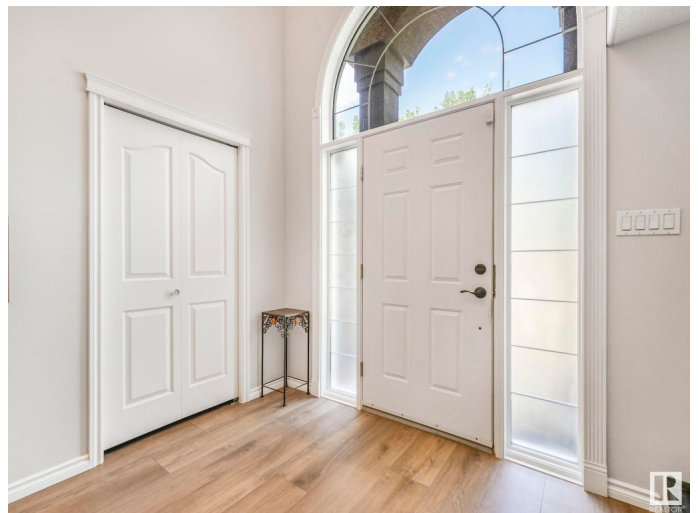
Beautiful 1,410 square foot hillside bungalow on 3.09 Acres in Keding Estates. Nestled in the peaceful and private country residential subdivision of Keding Estates, this stunning home offers the perfect blend of tranquility and convenience. Situated on a secluded lot, this property features a double attached garage and an impressive triple car garage shop with 220V power and radiant heating—perfect for car enthusiasts or hobbyists. The 3+1 bedroom home exudes the peaceful charm of a mountain retreat. Step inside to a bright, open-concept layout featuring a spacious kitchen with a sit-down island, ideal for entertaining. The adjoining dining area overlooks a large, tiered sundeck and a park-like backyard surrounded by forest, your own private sanctuary. The living room is a cozy yet elegant space, boasting large windows that flood the room with natural light and a showcase fireplace with a classic mantle. The primary bedroom offers a touch of luxury with its elegant ensuite, complete with a corner jetted

Built in 2000

Essential Information

MLS® #

E4441188



Price	\$785,000
Bedrooms	4
Bathrooms	3.00
Full Baths	3
Square Footage	1,411
Acres	3.09
Year Built	2000
Type	Rural
Sub-Type	Detached Single Family
Style	Hillside Bungalow
Status	Active

Community Information

Address	51110 Rge Road 212
Area	Rural Strathcona County
Subdivision	Keding Estates
City	Rural Strathcona County
County	ALBERTA
Province	AB
Postal Code	T8G 1E7

Amenities

Features	Closet Organizers, Deck, Vinyl Windows, Walkout Basement, See Remarks
----------	---

Interior

Interior Features	ensuite bathroom
Heating	Forced Air-1, Natural Gas
Stories	2
Has Basement	Yes
Basement	See Remarks, Finished

Exterior

Exterior	Wood
Exterior Features	Hillside, Landscaped, Private Setting
Construction	Wood
Foundation	Concrete Perimeter

Additional Information

Date Listed June 4th, 2025

Days on Market 12

Zoning Zone 80

DATA IS DEEMED RELIABLE BUT IS NOT GUARANTEED ACCURATE BY THE REALTORS® ASSOCIATION OF EDMONTON. COPYRIGHT 2025 BY THE REALTORS® ASSOCIATION OF EDMONTON. ALL RIGHTS RESERVED. Trademarks are owned or controlled by the Canadian Real Estate Association (CREA) and identify real estate professionals who are members of CREA (REALTOR®, REALTORS®) and/or the quality of services they provide (MLS®, Multiple Listing Service®)

Listing information last updated on June 16th, 2025 at 9:02am MDT