

\$350,000 - 332 Kirkpatrick Crescent, Edmonton

MLS® #E4436499

\$350,000

3 Bedroom, 1.50 Bathroom, 1,252 sqft

Single Family on 0.00 Acres

Kiniski Gardens, Edmonton, AB

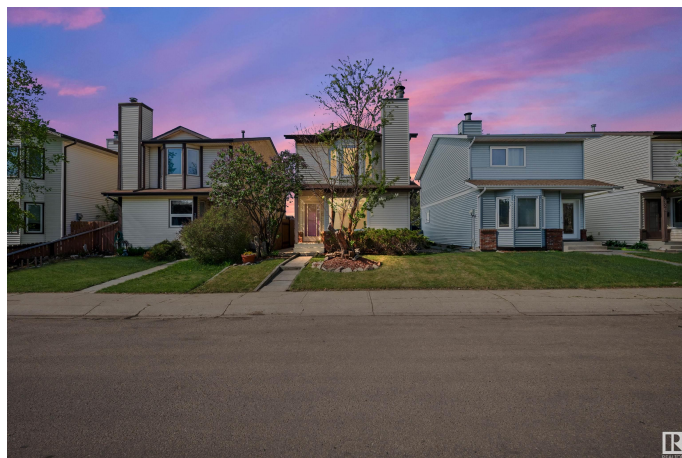
Welcome to Kiniski Gardens! This renovated gem offers 3 bedrooms, 1.5 bathrooms and is tucked away on a quiet crescent. The main floor features a spacious living room with large windows and a cozy corner wood-burning fireplace. The kitchen and dining area include patio doors leading to a sunny south-facing deck—perfect for BBQs and relaxing. A convenient half bath completes the main floor. Upstairs, you'll find 3 generous bedrooms with brand new carpet and a beautifully renovated full bath. The oversized primary bedroom features a wall-to-wall closet and tons of natural light that floods the space. The home has been freshly painted with updated flooring throughout. Additional upgrades include a newer furnace (2016) and vinyl windows. The basement offers laundry, mechanical, and a large unfinished area ready for your personal touch. Enjoy the fully fenced backyard with an awning over the deck and ample parking for your toys. Minutes to schools, churches, amenities, Anthony Henday and Whitemud Drive!

Built in 1981

Essential Information

MLS® # E4436499

Price \$350,000



| | |
|----------------|------------------------|
| Bedrooms | 3 |
| Bathrooms | 1.50 |
| Full Baths | 1 |
| Half Baths | 1 |
| Square Footage | 1,252 |
| Acres | 0.00 |
| Year Built | 1981 |
| Type | Single Family |
| Sub-Type | Detached Single Family |
| Style | 2 Storey |
| Status | Active |

Community Information

| | |
|-------------|--------------------------|
| Address | 332 Kirkpatrick Crescent |
| Area | Edmonton |
| Subdivision | Kiniski Gardens |
| City | Edmonton |
| County | ALBERTA |
| Province | AB |
| Postal Code | T6L 5E1 |

Amenities

| | |
|----------------|--|
| Amenities | Closet Organizers, Deck, Detectors Smoke, No Animal Home, No Smoking Home, Vinyl Windows |
| Parking Spaces | 3 |
| Parking | Rear Drive Access |

Interior

| | |
|--------------|--|
| Appliances | Dishwasher-Built-In, Dryer, Refrigerator, Storage Shed, Stove-Electric, Washer |
| Heating | Forced Air-2, Natural Gas |
| Fireplace | Yes |
| Fireplaces | Corner |
| Stories | 2 |
| Has Basement | Yes |
| Basement | Full, Unfinished |

Exterior

| | |
|----------|-------------|
| Exterior | Wood, Vinyl |
|----------|-------------|

| | |
|-------------------|---|
| Exterior Features | Airport Nearby, Back Lane, Fenced, Golf Nearby, Picnic Area, Playground Nearby, Public Swimming Pool, Public Transportation, Schools, Shopping Nearby |
| Roof | Asphalt Shingles |
| Construction | Wood, Vinyl |
| Foundation | Concrete Perimeter |

Additional Information

| | |
|-------------|----------------|
| Date Listed | May 15th, 2025 |
| Zoning | Zone 29 |

DATA IS DEEMED RELIABLE BUT IS NOT GUARANTEED ACCURATE BY THE REALTORS® ASSOCIATION OF EDMONTON. COPYRIGHT 2025 BY THE REALTORS® ASSOCIATION OF EDMONTON. ALL RIGHTS RESERVED.Trademarks are owned or controlled by the Canadian Real Estate Association (CREA) and identify real estate professionals who are members of CREA (REALTOR®, REALTORS®) and/or the quality of services they provide (MLS®, Multiple Listing Service®)

Listing information last updated on May 15th, 2025 at 7:32pm MDT