

\$227,900 - 5615 137 Avenue, Edmonton

MLS® #E4434020

\$227,900

2 Bedroom, 2.00 Bathroom, 958 sqft

Condo / Townhouse on 0.00 Acres

Belvedere, Edmonton, AB

Looking for a super clean, upgraded modern end unit townhouse? This 2 storey with a finished basement in Eastview Court boasts quality finishing from top to bottom. Upgraded flooring includes waterproof luxury vinyl plank in kitchen, 3/4 inch maple hardwood in living room and primary bedroom, 73 ounce polyester carpet w 10 lb underlay in 1 bedroom & stairs. Bathrooms are waterproof vinyl and ceramic tile. Finished basement is a great hideaway with vinyl coated drywall, 1/2 inch laminate and built in shelving unit. Furnace and hot water heater less than 6 years old and newer stainless appliances in kitchen. Window upgrade 2022 - triple pane, argon filled, double insulated. Private maintenance free back yard boasts a renewed deck with a louvered gazebo for shade & storage shed. Access to side common property for play fun. Low condo fees and a great location close to shopping and major traffic routes make this an ideal first time home or a great investment. Can easily be converted back to 3 bedrooms up.

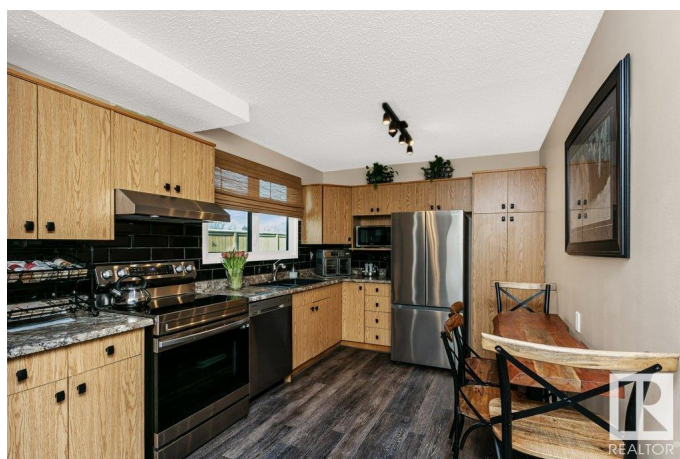
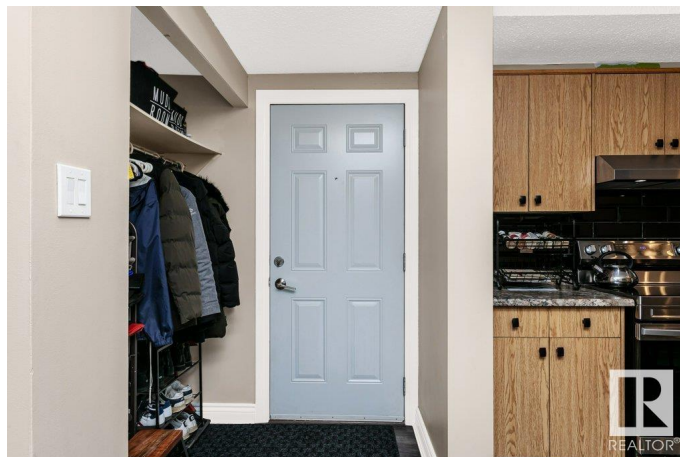
Built in 1977

Essential Information

MLS® # E4434020

Price \$227,900

Bedrooms 2



Bathrooms	2.00
Full Baths	2
Square Footage	958
Acres	0.00
Year Built	1977
Type	Condo / Townhouse
Sub-Type	Townhouse
Style	2 Storey
Status	Active

Community Information

Address	5615 137 Avenue
Area	Edmonton
Subdivision	Belvedere
City	Edmonton
County	ALBERTA
Province	AB
Postal Code	T5A 2H4

Amenities

Amenities	On Street Parking, Gazebo, No Animal Home, Parking-Extra, Parking-Visitor, Patio, Vinyl Windows
Parking Spaces	1
Parking	Stall

Interior

Appliances	Dishwasher-Built-In, Dryer, Hood Fan, Refrigerator, Storage Shed, Stove-Electric, Washer, Window Coverings
Heating	Forced Air-1, Natural Gas
Stories	3
Has Basement	Yes
Basement	Full, Finished

Exterior

Exterior	Wood, Stucco, Vinyl
Exterior Features	Fenced, Low Maintenance Landscape, No Back Lane, Public Transportation, Schools, Shopping Nearby, See Remarks
Roof	Asphalt Shingles
Construction	Wood, Stucco, Vinyl

Foundation Concrete Perimeter

School Information

Elementary Belvedere/Assisi
Middle Balwin/Cecilia
High LaZerte/O'Leary

Additional Information

Date Listed May 1st, 2025
Days on Market 2
Zoning Zone 02
Condo Fee \$335

DATA IS DEEMED RELIABLE BUT IS NOT GUARANTEED ACCURATE BY THE REALTORS® ASSOCIATION OF EDMONTON. COPYRIGHT 2025 BY THE REALTORS® ASSOCIATION OF EDMONTON. ALL RIGHTS RESERVED.Trademarks are owned or controlled by the Canadian Real Estate Association (CREA) and identify real estate professionals who are members of CREA (REALTOR®, REALTORS®) and/or the quality of services they provide (MLS®, Multiple Listing Service®)
Listing information last updated on May 3rd, 2025 at 2:47pm MDT