

Courtesy Of Terri L Drynan Of RE/MAX Real Estate

\$699,999 - 310 21539 Twp 503, Rural Leduc County

MLS® #E4433256

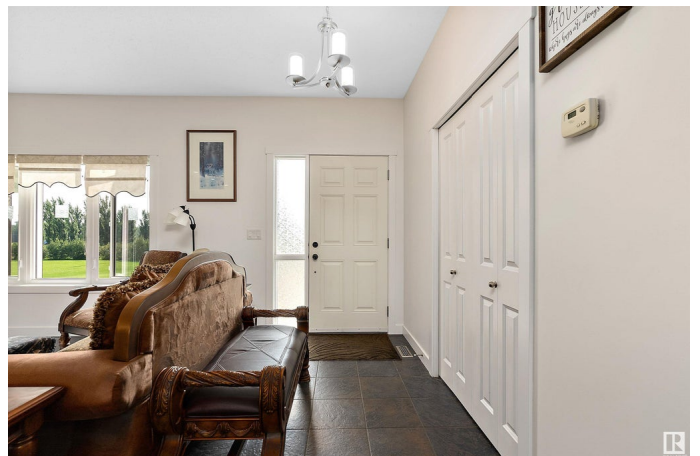
\$699,999

5 Bedroom, 3.50 Bathroom, 1,604 sqft

Rural on 2.82 Acres

Wildland Meadows, Rural Leduc County, AB

WOW, this absolutely STUNNING acreage may not last long! Over 3000 sq ft, 5 bedroom, 4 bathroom home is located in Wildland Meadows/Leduc County on paved road right to sub-division! The BEST part...private, quiet & secluded on an end road surrounded by protected sanctuary. Spacious front entry, dark rich hardwood floors, a gorgeous stone (floor-ceiling) fireplace, large dining area with custom stone-features, kitchen, island, stainless appliances (new stove), & opens to sunny SW HUGE deck! Master suite opens to deck, 3 pc ensuite, a walk in closet (& second large closet), 2 more generously sized bedrooms, a 4pc main bath, plus 2pc bathroom & lrg walk-into laundry /w sink, cupboard & storage, all make up main level. Fully-f basement, very large family room, games room, 4th & 5th HUGE bedrooms, another 4pc bathroom, tons of storage, this is a dream home! Only ONE owner, custom bungalow, attached o/s dbl heated garage, plus o/s detached garage shop /w poured cement. Home is equipped with back up generator!



Built in 2010

Essential Information

MLS® # E4433256

Price \$699,999

Bedrooms	5
Bathrooms	3.50
Full Baths	3
Half Baths	1
Square Footage	1,604
Acres	2.82
Year Built	2010
Type	Rural
Sub-Type	Detached Condominium
Style	Bungalow
Status	Active

Community Information

Address	310 21539 Twp 503
Area	Rural Leduc County
Subdivision	Wildland Meadows
City	Rural Leduc County
County	ALBERTA
Province	AB
Postal Code	T0B 3M2

Amenities

Features	Ceiling 9 ft., Deck, Detectors Smoke, No Animal Home, No Smoking Home, See Remarks
----------	--

Interior

Interior Features	ensuite bathroom
Heating	Forced Air-1, Natural Gas
Fireplace	Yes
Stories	2
Has Basement	Yes
Basement	Full, Finished

Exterior

Exterior	Wood
Exterior Features	Landscaped, Low Maintenance Landscape, See Remarks
Construction	Wood
Foundation	Concrete Perimeter

Additional Information

Date Listed	April 29th, 2025
Days on Market	3
Zoning	Zone 80
Condo Fee	\$125

DATA IS DEEMED RELIABLE BUT IS NOT GUARANTEED ACCURATE BY THE REALTORS® ASSOCIATION OF EDMONTON. COPYRIGHT 2025 BY THE REALTORS® ASSOCIATION OF EDMONTON. ALL RIGHTS RESERVED. Trademarks are owned or controlled by the Canadian Real Estate Association (CREA) and identify real estate professionals who are members of CREA (REALTOR®, REALTORS®) and/or the quality of services they provide (MLS®, Multiple Listing Service®)

Listing information last updated on May 2nd, 2025 at 9:32am MDT