

## \$699,000 - 9 Linksview Close, Spruce Grove

MLS® #E4432526

**\$699,000**

4 Bedroom, 3.50 Bathroom, 2,400 sqft

Single Family on 0.00 Acres

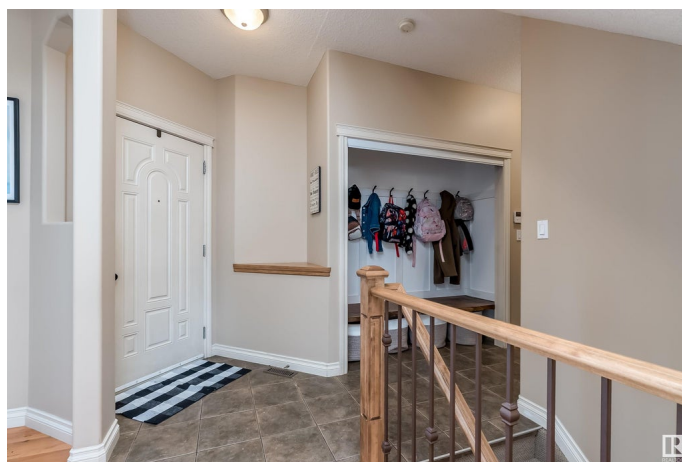
Linkside, Spruce Grove, AB

WOW! WOW! LINKSVIEW CLOSE \* SPRUCE GROVE \*Shingles 2024 \*HWT 2021 \*Kitchen Faucet & Taps 2022 \*Maple Cabinets \*Separate Coffee Bar \*Granite Countertops \*Angle-cut Kitchen Island \*Gas Fireplace X 2 \*Bonus Room \*Kids Climbing Wall \*Main Floor Office/Den/Flex Room \*2nd Floor Laundry \*Custom Entry Closet/Maple Bannisters/Niches \*In-Floor Heated Basement \*Fully Finished Basement w/ Refreshment Bar... \*Oversize Double Garage w/ In-Floor Heat & Drain \*Triple-Wide Aggregate Driveway \*Large Fenced Backyard \*Raised Garden Beds \*Stones-throw to Park, Walking Trails & Golf Course \*Public transit \*E-Scooter Community \*LINKSVIEW CLOSE in SPRUCE GROVE Don't Blink twice or this beauty will be GONE!

Built in 2004

### Essential Information

MLS® #	E4432526
Price	\$699,000
Bedrooms	4
Bathrooms	3.50
Full Baths	3
Half Baths	1
Square Footage	2,400
Acres	0.00



Year Built	2004
Type	Single Family
Sub-Type	Detached Single Family
Style	2 Storey
Status	Active

### **Community Information**

Address	9 Linksvie Close
Area	Spruce Grove
Subdivision	Linkside
City	Spruce Grove
County	ALBERTA
Province	AB
Postal Code	T7X 4P3

### **Amenities**

Amenities	Deck, Detectors Smoke, Gazebo
Parking	Double Garage Attached

### **Interior**

Interior Features	ensuite bathroom
Appliances	Air Conditioning-Central, Dishwasher-Built-In, Fan-Ceiling, Garage Control, Garage Opener, Microwave Hood Fan, Refrigerator, Storage Shed, Vacuum System Attachments, Vacuum Systems, Washer, Window Coverings, See Remarks
Heating	Forced Air-1, Natural Gas
Fireplace	Yes
Fireplaces	Glass Door, Mantel, Tile Surround
Stories	3
Has Basement	Yes
Basement	Full, Finished

### **Exterior**

Exterior	Wood, Brick, Vinyl
Exterior Features	Backs Onto Park/Trees, Cul-De-Sac, Fruit Trees/Shrubs, Golf Nearby, No Back Lane, No Through Road, Playground Nearby, Public Swimming Pool, Public Transportation, Schools, Shopping Nearby
Roof	Asphalt Shingles
Construction	Wood, Brick, Vinyl
Foundation	Concrete Perimeter

**Additional Information**

Date Listed            April 24th, 2025  
Days on Market       8  
Zoning                 Zone 91

DATA IS DEEMED RELIABLE BUT IS NOT GUARANTEED ACCURATE BY THE REALTORS® ASSOCIATION OF EDMONTON. COPYRIGHT 2025 BY THE REALTORS® ASSOCIATION OF EDMONTON. ALL RIGHTS RESERVED.Trademarks are owned or controlled by the Canadian Real Estate Association (CREA) and identify real estate professionals who are members of CREA (REALTOR®, REALTORS®) and/or the quality of services they provide (MLS®, Multiple Listing Service®)  
Listing information last updated on May 2nd, 2025 at 7:32pm MDT