

## \$0 - 4612 4614 101 Street, Edmonton

MLS® #E4432174

**\$0**

0 Bedroom, 0.00 Bathroom,  
Industrial on 0.00 Acres

Papaschase Industrial, Edmonton, AB

• Comes with dedicated secured yard space  
• (2) 12' x 14' overhead doors  
• Fibre optics available  
• Located in one of the principle commercial nodes in Edmonton with convenient access to the Whitemud, Calgary Trail & Gateway Blvd, and Anthony Henday Drive

Built in 1977

### Essential Information

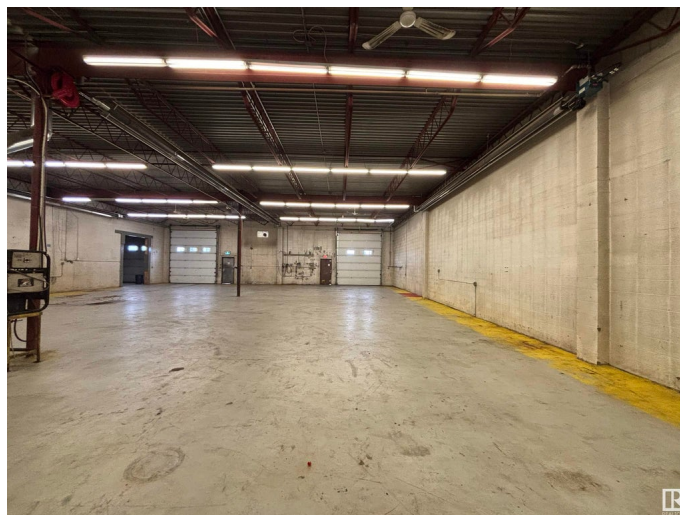
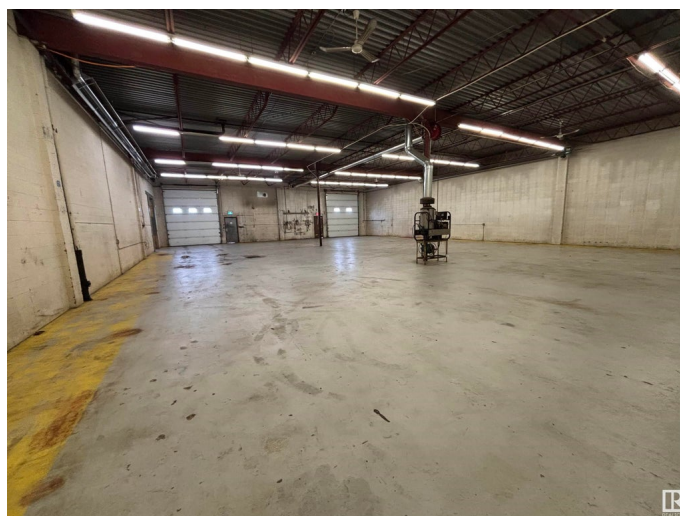
|            |            |
|------------|------------|
| MLS® #     | E4432174   |
| Bathrooms  | 0.00       |
| Acres      | 0.00       |
| Year Built | 1977       |
| Type       | Industrial |
| Status     | Active     |

### Community Information

|             |                       |
|-------------|-----------------------|
| Address     | 4612 4614 101 Street  |
| Area        | Edmonton              |
| Subdivision | Papaschase Industrial |
| City        | Edmonton              |
| County      | ALBERTA               |
| Province    | AB                    |
| Postal Code | T6E 5G9               |

### Exterior

|          |       |
|----------|-------|
| Exterior | Mixed |
|----------|-------|



Construction           Mixed

**Additional Information**

Date Listed            April 22nd, 2025

Days on Market       117

Zoning                 Zone 41

DATA IS DEEMED RELIABLE BUT IS NOT GUARANTEED ACCURATE BY THE REALTORS® ASSOCIATION OF EDMONTON. COPYRIGHT 2025 BY THE REALTORS® ASSOCIATION OF EDMONTON. ALL RIGHTS RESERVED.Trademarks are owned or controlled by the Canadian Real Estate Association (CREA) and identify real estate professionals who are members of CREA (REALTOR®, REALTORS®) and/or the quality of services they provide (MLS®, Multiple Listing Service®)

Listing information last updated on August 17th, 2025 at 4:17am MDT