

Courtesy Of Jeff D Jackson Of Bode

# **\$674,900 - 19011 20 Avenue, Edmonton**

MLS® #E4430975

**\$674,900**

3 Bedroom, 2.50 Bathroom, 2,172 sqft

Single Family on 0.00 Acres

River's Edge, Edmonton, AB

Introducing the Apparition by Look Master Builder, a stunning 3-bedroom, 2.5-bathroom, two-story home with a front attached garage, situated on a spacious pie-shaped lot in the desirable community of Rivers Edge. Step inside to an open-to-above entry foyer that flows into the main floor's open concept living space. The kitchen features a central island and an adjacent eating nook, while a cozy electric fireplace with a mantle anchors the great room. The main floor also includes a den/office, and a walkthrough mudroom leads to a convenient pantry. Upstairs, you'll find a spacious bonus room and a luxurious primary bedroom, complete with a sitting area with a vaulted ceiling, and a lavish five-piece ensuite with a soaker tub, dual sinks, and a standalone shower. Two additional bedrooms and a laundry room complete the upper floor, offering comfort and style for modern living. Photos are representative. Quick possession available!



Built in 2024

## **Essential Information**

MLS® #	E4430975
Price	\$674,900
Bedrooms	3
Bathrooms	2.50

Full Baths	2
Half Baths	1
Square Footage	2,172
Acres	0.00
Year Built	2024
Type	Single Family
Sub-Type	Detached Single Family
Style	2 Storey
Status	Active

### Community Information

Address	19011 20 Avenue
Area	Edmonton
Subdivision	River's Edge
City	Edmonton
County	ALBERTA
Province	AB
Postal Code	T6M 2N6

### Amenities

Amenities	No Animal Home, No Smoking Home, Vaulted Ceiling
Parking Spaces	4
Parking	Double Garage Attached

### Interior

Interior Features	ensuite bathroom
Appliances	None
Heating	Forced Air-1, Natural Gas
Fireplace	Yes
Fireplaces	Mantel
Stories	2
Has Basement	Yes
Basement	Full, Unfinished

### Exterior

Exterior	Wood, Stone, Vinyl
Exterior Features	Park/Reserve, Playground Nearby, Schools, Shopping Nearby
Roof	Asphalt Shingles
Construction	Wood, Stone, Vinyl

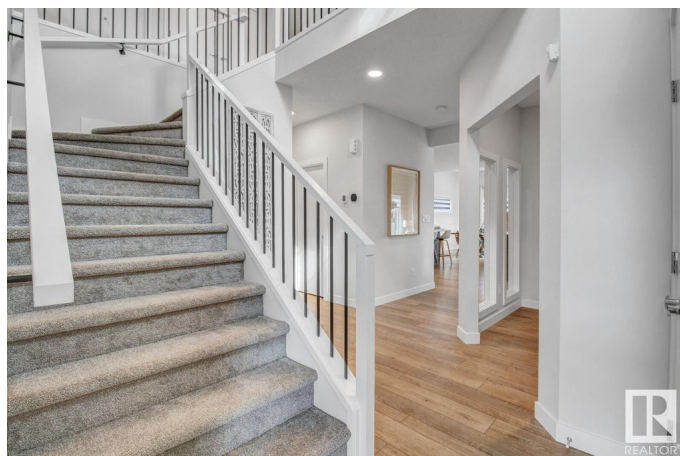
Foundation      Concrete Perimeter, Wood

### **Additional Information**

Date Listed      April 15th, 2025

Days on Market      63

Zoning      Zone 57



DATA IS DEEMED RELIABLE BUT IS NOT GUARANTEED ACCURATE BY THE REALTORS® ASSOCIATION OF EDMONTON. COPYRIGHT 2025 BY THE REALTORS® ASSOCIATION OF EDMONTON. ALL RIGHTS RESERVED. Trademarks are owned or controlled by the Canadian Real Estate Association (CREA) and identify real estate professionals who are members of CREA (REALTOR®, REALTORS®) and/or the quality of services they provide (MLS®, Multiple Listing Service®)

Listing information last updated on June 16th, 2025 at 10:47pm MDT