

# \$2,500,000 - N/A, Rural Parkland County

MLS® #E4429841

**\$2,500,000**

5 Bedroom, 5.50 Bathroom, 4,889 sqft  
Rural on 3.00 Acres

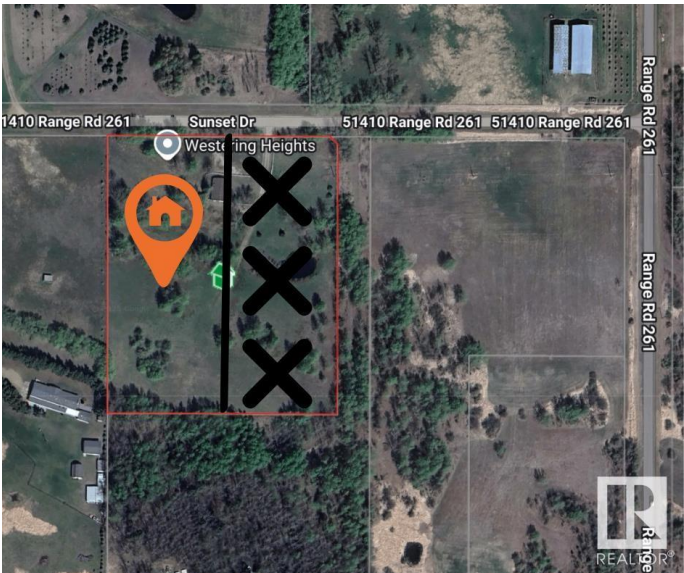
Westering Heights (Parkland), Rural Parkland County, AB

Great opportunity to own a luxury estate on a 3-acre parcel just 10 mins from the Anthony Henday close to Costco, River Cree & all amenities. This stunning 2-storey home offers almost 5,000 sq. ft. of above-grade living space, a 4-car garage, & a walkout bsmt backing onto green space. Upstairs: 5 spacious bdrms, each w/ its own ensuite & walk-in closet. The primary suite is a true retreat featuring a center island closet, 6-pc ensuite w/ steam shower, coffee bar, & private patio. A bright loft also opens onto its own balcony. Main floor impresses w/ soaring ceilings, a large great rm, formal dining, & an oversized kitchen + spice kitchen. The walkout bsmt is left unfinished offering you the chance to build out your dream lower level. Enjoy luxury living surrounded by nature, just minutes from city life. Premium finishes, open-concept design, and space to grow this home blends elegance, comfort, and function in a really great setting.

Built in 2025

## Essential Information

|          |             |
|----------|-------------|
| MLS® #   | E4429841    |
| Price    | \$2,500,000 |
| Bedrooms | 5           |



|                |                        |
|----------------|------------------------|
| Bathrooms      | 5.50                   |
| Full Baths     | 5                      |
| Half Baths     | 1                      |
| Square Footage | 4,889                  |
| Acres          | 3.00                   |
| Year Built     | 2025                   |
| Type           | Rural                  |
| Sub-Type       | Detached Single Family |
| Style          | 2 Storey               |
| Status         | Active                 |

### Community Information

|             |                              |
|-------------|------------------------------|
| Address     | N/A                          |
| Area        | Rural Parkland County        |
| Subdivision | Westering Heights (Parkland) |
| City        | Rural Parkland County        |
| County      | ALBERTA                      |
| Province    | AB                           |
| Postal Code | T7Y 1B4                      |

### Amenities

|                |             |
|----------------|-------------|
| Features       | See Remarks |
| Parking Spaces | 7           |

### Interior

|                   |                           |
|-------------------|---------------------------|
| Interior Features | ensuite bathroom          |
| Heating           | Forced Air-1, Natural Gas |
| Stories           | 2                         |
| Has Basement      | Yes                       |
| Basement          | Full, Unfinished          |

### Exterior

|                   |                                              |
|-------------------|----------------------------------------------|
| Exterior          | Wood                                         |
| Exterior Features | Cul-De-Sac, No Through Road, Private Setting |
| Construction      | Wood                                         |
| Foundation        | Concrete Perimeter                           |

### Additional Information

|             |                 |
|-------------|-----------------|
| Date Listed | April 9th, 2025 |
|-------------|-----------------|

Days on Market 130

Zoning Zone 90

DATA IS DEEMED RELIABLE BUT IS NOT GUARANTEED ACCURATE BY THE REALTORS® ASSOCIATION OF EDMONTON. COPYRIGHT 2025 BY THE REALTORS® ASSOCIATION OF EDMONTON. ALL RIGHTS RESERVED. Trademarks are owned or controlled by the Canadian Real Estate Association (CREA) and identify real estate professionals who are members of CREA (REALTOR®, REALTORS®) and/or the quality of services they provide (MLS®, Multiple Listing Service®)

Listing information last updated on August 17th, 2025 at 12:32pm MDT