

\$90,000 - 108 14908 26 Street, Edmonton

MLS® #E4429448

\$90,000

2 Bedroom, 1.00 Bathroom, 765 sqft

Condo / Townhouse on 0.00 Acres

Fraser, Edmonton, AB

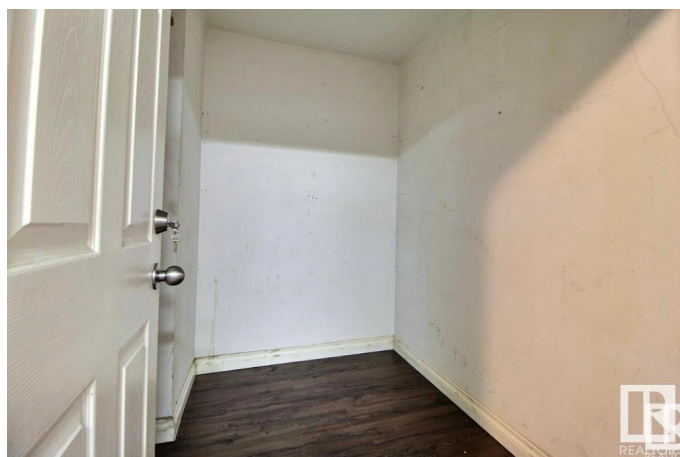
Amazing opportunity for first time buyers or investors! This 2 bed 1 bath plus den is a perfect home ! As you enter, you are greeted by an open-concept design with a large kitchen and spacious dining and living room ! Primary bedroom has a walk-in closet and second bedroom are very generous in size ! Amenities include playground, schools,public transportation, easy access to Anthony Henday or yellow head ! Donâ€™t miss out on this opportunity! Tenant pays \$1400 monthly.

Built in 1981

Essential Information

MLS® #	E4429448
Price	\$90,000
Bedrooms	2
Bathrooms	1.00
Full Baths	1
Square Footage	765
Acres	0.00
Year Built	1981
Type	Condo / Townhouse
Sub-Type	Lowrise Apartment
Style	Single Level Apartment
Status	Active

Community Information



Address	108 14908 26 Street
Area	Edmonton
Subdivision	Fraser
City	Edmonton
County	ALBERTA
Province	AB
Postal Code	T5Y 2G4

Amenities

Amenities	On Street Parking
Parking	Stall

Interior

Appliances	Dishwasher-Built-In, Refrigerator, Stove-Electric
Heating	Baseboard, Natural Gas
# of Stories	3
Stories	1
Has Basement	Yes
Basement	None, No Basement

Exterior

Exterior	Wood
Exterior Features	Playground Nearby, Public Transportation, Schools, Shopping Nearby
Roof	Asphalt Shingles
Construction	Wood
Foundation	Concrete Perimeter

Additional Information

Date Listed	April 7th, 2025
Days on Market	85
Zoning	Zone 35
Condo Fee	\$533

DATA IS DEEMED RELIABLE BUT IS NOT GUARANTEED ACCURATE BY THE REALTORS® ASSOCIATION OF EDMONTON. COPYRIGHT 2025 BY THE REALTORS® ASSOCIATION OF EDMONTON. ALL RIGHTS RESERVED. Trademarks are owned or controlled by the Canadian Real Estate Association (CREA) and identify real estate professionals who are members of CREA (REALTOR®, REALTORS®) and/or the quality of services they provide (MLS®, Multiple Listing Service®)

Listing information last updated on July 1st, 2025 at 1:48pm MDT