

\$259,900 - 11505 84 Street, Edmonton

MLS® #E4427423

\$259,900

1 Bedroom, 1.00 Bathroom, 743 sqft
Single Family on 0.00 Acres

Parkdale (Edmonton), Edmonton, AB

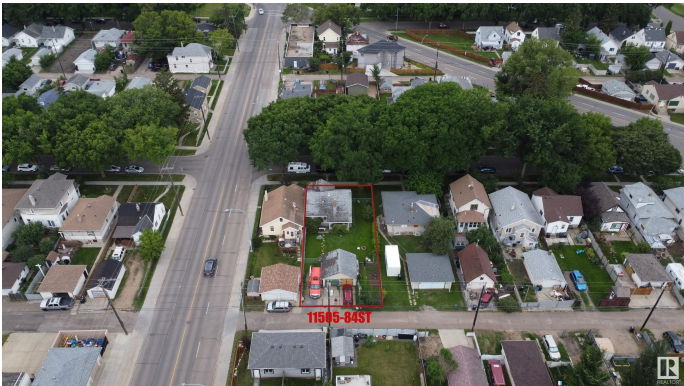
Location, location & this is the LOCATION! **
Heart of the city of Edmonton!! ** 9-minute
walk to Stadium Station. ** Home is a
surprisingly clean and well-maintained. Current
rent \$1,200/month. ** LOT size: 545.34 m2;
14.9m X 36.6m (49 feet X 120 feet). It is 50%
wider than many others in this community. **
Den can be easily converted into an additional
bedroom. ** Covered porch. ** Work/exercise
space at basement. ** Home is what you make
it!

Built in 1928

Essential Information

| | |
|----------------|------------------------|
| MLS® # | E4427423 |
| Price | \$259,900 |
| Bedrooms | 1 |
| Bathrooms | 1.00 |
| Full Baths | 1 |
| Square Footage | 743 |
| Acres | 0.00 |
| Year Built | 1928 |
| Type | Single Family |
| Sub-Type | Detached Single Family |
| Style | Bungalow |
| Status | Active |

Community Information



| | |
|-------------|---------------------|
| Address | 11505 84 Street |
| Area | Edmonton |
| Subdivision | Parkdale (Edmonton) |
| City | Edmonton |
| County | ALBERTA |
| Province | AB |
| Postal Code | T5B 3B6 |

Amenities

| | |
|-----------|------------------------|
| Amenities | See Remarks |
| Parking | Double Garage Detached |

Interior

| | |
|--------------|---|
| Appliances | Dishwasher-Built-In, Dryer, Refrigerator, Stove-Electric, Washer, Window Coverings, See Remarks |
| Heating | Forced Air-1, Natural Gas |
| Stories | 1 |
| Has Basement | Yes |
| Basement | Full, Unfinished |

Exterior

| | |
|-------------------|---------------------|
| Exterior | Wood, Stucco, Vinyl |
| Exterior Features | See Remarks |
| Roof | Asphalt Shingles |
| Construction | Wood, Stucco, Vinyl |
| Foundation | Concrete Perimeter |

Additional Information

| | |
|----------------|------------------|
| Date Listed | March 25th, 2025 |
| Days on Market | 84 |
| Zoning | Zone 05 |

DATA IS DEEMED RELIABLE BUT IS NOT GUARANTEED ACCURATE BY THE REALTORS® ASSOCIATION OF EDMONTON. COPYRIGHT 2025 BY THE REALTORS® ASSOCIATION OF EDMONTON. ALL RIGHTS RESERVED. Trademarks are owned or controlled by the Canadian Real Estate Association (CREA) and identify real estate professionals who are members of CREA (REALTOR®, REALTORS®) and/or the quality of services they provide (MLS®, Multiple Listing Service®)

Listing information last updated on June 17th, 2025 at 7:17am MDT