

\$189,900 - 125 10121 80 Avenue, Edmonton

MLS® #E4427159

\$189,900

1 Bedroom, 1.00 Bathroom, 589 sqft

Condo / Townhouse on 0.00 Acres

Ritchie, Edmonton, AB

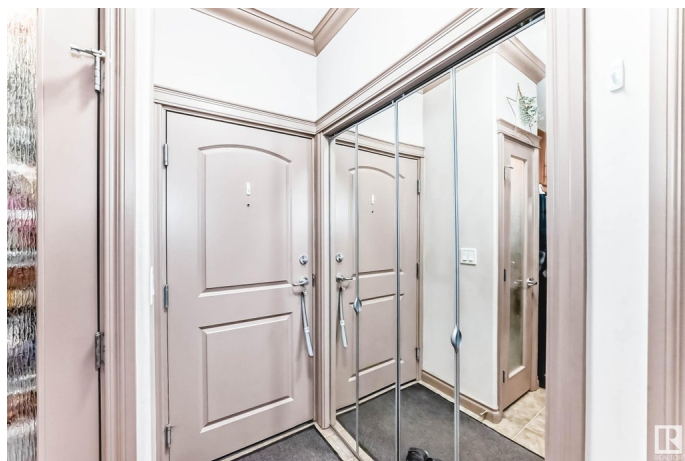
Welcome to Ritchie This air-conditioned ground-level condo offers the perfect blend of comfort and convenience. Featuring a 1 bed + den layout with 9 ft ceilings, in-suite laundry, and a cozy fireplace, it's designed for modern living. The patio comes with a gas line.

Enjoy titled underground parking, a storage unit, and top-notch building amenities, including a gym, wash bay, and guest suites. Steps from Whyte Ave this unit is next to all the amenities, this is the perfect home for students, professionals, or investors. Don't miss out!

Built in 2006

Essential Information

MLS® #	E4427159
Price	\$189,900
Bedrooms	1
Bathrooms	1.00
Full Baths	1
Square Footage	589
Acres	0.00
Year Built	2006
Type	Condo / Townhouse
Sub-Type	Lowrise Apartment
Style	Single Level Apartment
Status	Active



Community Information

Address	125 10121 80 Avenue
Area	Edmonton
Subdivision	Ritchie
City	Edmonton
County	ALBERTA
Province	AB
Postal Code	T6E 0B9

Amenities

Amenities	Air Conditioner, Carbon Monoxide Detectors, Detectors Smoke, Exercise Room, Parking-Visitor, Security Door
Parking	Underground

Interior

Appliances	Air Conditioning-Central, Dishwasher - Energy Star, Dryer, Garage Opener, Microwave Hood Fan, Refrigerator, Stove-Electric, Washer
Heating	Hot Water, Natural Gas
# of Stories	4
Stories	4
Has Basement	Yes
Basement	None, No Basement

Exterior

Exterior	Wood, Vinyl
Exterior Features	Public Transportation, Schools
Roof	Asphalt Shingles
Construction	Wood, Vinyl
Foundation	Concrete Perimeter

Additional Information

Date Listed	March 24th, 2025
Days on Market	38
Zoning	Zone 17
Condo Fee	\$397

DATA IS DEEMED RELIABLE BUT IS NOT GUARANTEED ACCURATE BY THE REALTORS® ASSOCIATION OF EDMONTON. COPYRIGHT 2025 BY THE REALTORS® ASSOCIATION OF EDMONTON. ALL RIGHTS RESERVED. Trademarks are owned or controlled by the Canadian Real Estate Association (CREA) and identify real estate professionals who are members of CREA (REALTOR®, REALTORS®) and/or the quality of services they provide (MLS®, Multiple Listing Service®)

Listing information last updated on May 1st, 2025 at 2:33pm MDT