

\$720,000 - 628 Ortona Way, Edmonton

MLS® #E4425483

\$720,000

5 Bedroom, 3.50 Bathroom, 1,758 sqft

Single Family on 0.00 Acres

Griesbach, Edmonton, AB

LEGAL BASEMENT SUITE & EXTRA SPACE FOR FUTURE GARAGE SUITE. This

high-end 1,758.30 sq. ft. 2-storey home in Griesbach combines style, function, and income potential with a legal 2-bedroom basement suite. The main floor features 9 ft. ceilings, a gourmet kitchen with quartz countertops, custom maple cabinets, and a large island with an eating bar. The living room's stone-accented gas fireplace adds warmth, while the dining area is perfect for hosting. A 2-piece bath and main floor laundry complete the space. Upstairs, the primary suite offers a walk-in closet and spa-like ensuite, with two more bedrooms and a 4-piece bath rounding out the level. The fully finished basement suite has its own laundry, full kitchen, second family area, and 2 bedrooms. Outside, enjoy a 10x22 covered deck, landscaped yard, and an oversized double garage with space for a future garage suite. All this in a prime community with parks, trails, and top amenities nearby!

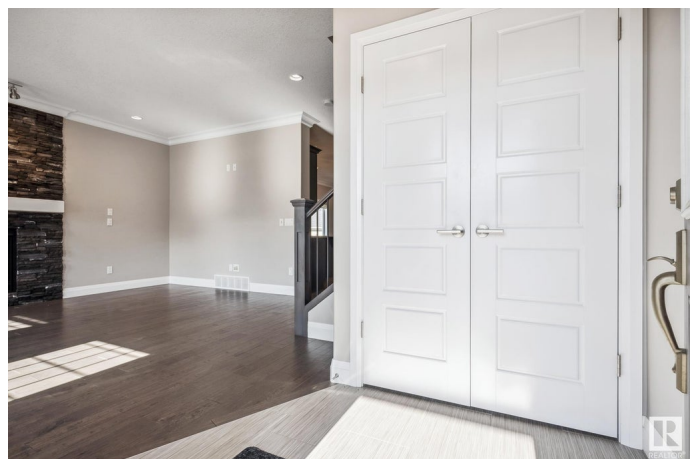
Built in 2016

Essential Information

MLS® # E4425483

Price \$720,000

Bedrooms 5



Bathrooms	3.50
Full Baths	3
Half Baths	1
Square Footage	1,758
Acres	0.00
Year Built	2016
Type	Single Family
Sub-Type	Detached Single Family
Style	2 Storey
Status	Active

Community Information

Address	628 Ortona Way
Area	Edmonton
Subdivision	Griesbach
City	Edmonton
County	ALBERTA
Province	AB
Postal Code	T5E 6S9

Amenities

Amenities	Carbon Monoxide Detectors, Ceiling 9 ft., Deck, Detectors Smoke, No Animal Home, No Smoking Home, Patio, Vinyl Windows
Parking Spaces	4
Parking	Double Garage Detached

Interior

Interior Features	ensuite bathroom
Appliances	Alarm/Security System, Dishwasher-Built-In, Dryer, Microwave Hood Fan, Refrigerator, Stove-Electric, Vacuum Systems, Washer, Window Coverings
Heating	Forced Air-1, Forced Air-2, Natural Gas
Fireplace	Yes
Fireplaces	Mantel
Stories	3
Has Suite	Yes
Has Basement	Yes
Basement	Full, Finished

Exterior

Exterior	Wood, Stone, Vinyl
Exterior Features	Back Lane, Corner Lot, Cul-De-Sac, Fenced, Flat Site, Playground Nearby, Public Swimming Pool, Public Transportation, Schools, Shopping Nearby
Roof	Asphalt Shingles
Construction	Wood, Stone, Vinyl
Foundation	Concrete Perimeter

School Information

Elementary	Major-General Griesbach
Middle	Major-General Griesbach
High	Queen Elizabeth

Additional Information

Date Listed	March 13th, 2025
Days on Market	54
Zoning	Zone 27

DATA IS DEEMED RELIABLE BUT IS NOT GUARANTEED ACCURATE BY THE REALTORS® ASSOCIATION OF EDMONTON. COPYRIGHT 2025 BY THE REALTORS® ASSOCIATION OF EDMONTON. ALL RIGHTS RESERVED.Trademarks are owned or controlled by the Canadian Real Estate Association (CREA) and identify real estate professionals who are members of CREA (REALTOR®, REALTORS®) and/or the quality of services they provide (MLS®, Multiple Listing Service®)

Listing information last updated on May 6th, 2025 at 4:47am MDT