

\$88,000 - 15 5715 133 Avenue, Edmonton

MLS® #E4425173

\$88,000

2 Bedroom, 1.00 Bathroom, 782 sqft

Condo / Townhouse on 0.00 Acres

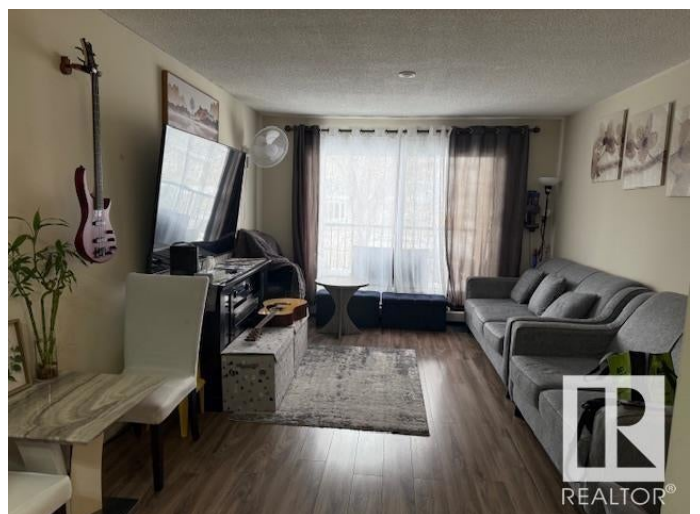
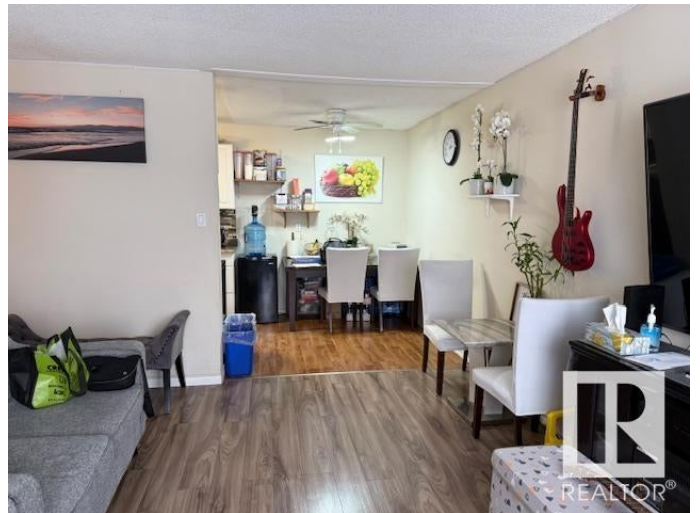
Belvedere, Edmonton, AB

CLEAN!! MOVE IN READY!! NEW WINDOWS AND PATIO DOORS!! BALCONY!! Bright and sunny 2 bedroom and full bathroom condo that is upgraded and renovated. Colonial style kitchen cabinets, mosaic tile backsplash, stainless steel appliances, dining area, fully renovated bathroom, spacious bedrooms, large living room with patio doors to balcony. HUGE primary bedroom and newer flooring throughout. Extra large storage room. This suite has one of the best locations in the entire building. Parking stall included. Condo fees include heat and water. Some furniture can be included. Close to Belvedere LRT, Costco, Superstore, Manning Crossing shopping and some wonderful restaurants. Great price and a convenient location!!

Built in 1970

Essential Information

MLS® #	E4425173
Price	\$88,000
Bedrooms	2
Bathrooms	1.00
Full Baths	1
Square Footage	782
Acres	0.00
Year Built	1970



Type	Condo / Townhouse
Sub-Type	Lowrise Apartment
Style	Single Level Apartment
Status	Active

Community Information

Address	15 5715 133 Avenue
Area	Edmonton
Subdivision	Belvedere
City	Edmonton
County	ALBERTA
Province	AB
Postal Code	T5A 1C2

Amenities

Amenities	Off Street Parking, Detectors Smoke, No Animal Home, No Smoking Home, Security Door, Vinyl Windows
Parking	Stall

Interior

Appliances	Refrigerator, Stove-Electric
Heating	Hot Water, Natural Gas
# of Stories	3
Stories	1
Has Basement	Yes
Basement	None, No Basement

Exterior

Exterior	Wood, Vinyl
Exterior Features	Landscaped, Picnic Area, Playground Nearby, Public Transportation, Schools, Shopping Nearby
Roof	Tar & Gravel
Construction	Wood, Vinyl
Foundation	Concrete Perimeter

Additional Information

Date Listed	March 11th, 2025
Days on Market	53
Zoning	Zone 02

Condo Fee \$379

DATA IS DEEMED RELIABLE BUT IS NOT GUARANTEED ACCURATE BY THE REALTORS® ASSOCIATION OF EDMONTON. COPYRIGHT 2025 BY THE REALTORS® ASSOCIATION OF EDMONTON. ALL RIGHTS RESERVED.Trademarks are owned or controlled by the Canadian Real Estate Association (CREA) and identify real estate professionals who are members of CREA (REALTOR®, REALTORS®) and/or the quality of services they provide (MLS®, Multiple Listing Service®)

Listing information last updated on May 2nd, 2025 at 10:02pm MDT