

\$699,900 - 32 23329 Sh 651, Rural Sturgeon County

MLS® #E4421749

\$699,900

5 Bedroom, 3.00 Bathroom, 1,597 sqft

Rural on 1.56 Acres

Lily Lake Estates_MSTU, Rural Sturgeon County, AB

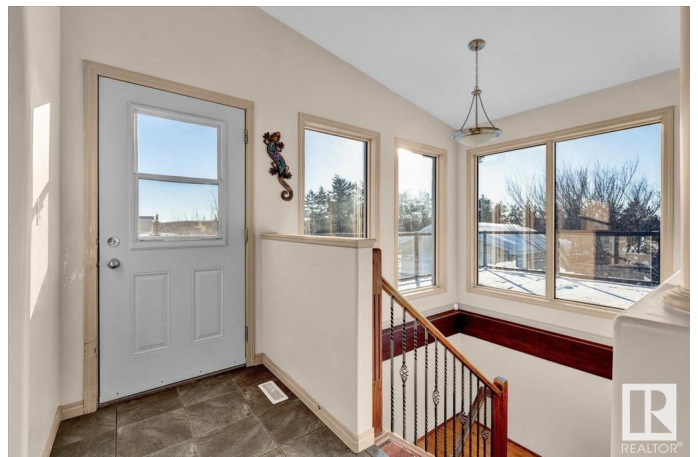
Welcome to Lily Lake Estates in Sturgeon County - one of the rare areas where your home overlooks Lily Lake and the lot has loads of trees and a gentle slope. Built in 2008 the 1597 sq ft WALK OUT BUNGALOW has so many great qualities, starting with a wrap-around deck for seasonal views . Inside the home are vaulted ceilings & loads of windows for natural light. Main floor laundry in the 2 pc bathroom at the side entrance, open concept kitchen, dining area & living room. The primary bedroom on this level has a 5 pc ensuite, walk-in closet & 2nd closet. 2 other bedrooms & a 4 pc bathroom. The basement w/ 9 ft ceilings is well on its way to completion - drywalled, painted, most of the ceiling done, a partly completed wet bar, plus 2 more bedrooms & bathroom (walk-in shower needs finishing). Garden doors lead to the lower patio. Central A/C, Central Vac, & ICF foundation. Detached double garage is insulated & heated & gated front entrance on this 1.56 acre lot. Relax at the firepit with lake views!

Built in 2008

Essential Information

MLS® # E4421749

Price \$699,900



| | |
|----------------|------------------------|
| Bedrooms | 5 |
| Bathrooms | 3.00 |
| Full Baths | 2 |
| Half Baths | 2 |
| Square Footage | 1,597 |
| Acres | 1.56 |
| Year Built | 2008 |
| Type | Rural |
| Sub-Type | Detached Single Family |
| Style | Raised Bungalow |
| Status | Active |

Community Information

| | |
|-------------|------------------------|
| Address | 32 23329 Sh 651 |
| Area | Rural Sturgeon County |
| Subdivision | Lily Lake Estates_MSTU |
| City | Rural Sturgeon County |
| County | ALBERTA |
| Province | AB |
| Postal Code | T0A 1N6 |

Amenities

| | |
|----------|---|
| Features | Air Conditioner, Closet Organizers, Deck, Detectors Smoke, Fire Pit, Hot Water Natural Gas, No Smoking Home, Vaulted Ceiling, Vinyl Windows, Walkout Basement, 9 ft. Basement Ceiling |
|----------|---|

Interior

| | |
|-------------------|---------------------------|
| Interior Features | ensuite bathroom |
| Heating | Forced Air-1, Natural Gas |
| Fireplace | Yes |
| Stories | 2 |
| Has Basement | Yes |
| Basement | Full, Partially Finished |

Exterior

| | |
|-------------------|---|
| Exterior | Modular |
| Exterior Features | Golf Nearby, Landscaped, Sloping Lot, Treed Lot |
| Construction | Modular |
| Foundation | Insulated Concrete Form |

Additional Information

Date Listed February 15th, 2025

Days on Market 122

Zoning Zone 60

DATA IS DEEMED RELIABLE BUT IS NOT GUARANTEED ACCURATE BY THE REALTORS® ASSOCIATION OF EDMONTON. COPYRIGHT 2025 BY THE REALTORS® ASSOCIATION OF EDMONTON. ALL RIGHTS RESERVED. Trademarks are owned or controlled by the Canadian Real Estate Association (CREA) and identify real estate professionals who are members of CREA (REALTOR®, REALTORS®) and/or the quality of services they provide (MLS®, Multiple Listing Service®)

Listing information last updated on June 16th, 2025 at 10:47pm MDT