

\$375,000 - 213 7609 Sparrow Drive, Leduc

MLS® #E4421288

\$375,000

0 Bedroom, 0.00 Bathroom,
Industrial on 0.00 Acres

None, Leduc, AB

Warehouse bay, available for possession with 30 days notice. Open warehouse with large overhead door. Buildout includes a washroom and kitchenette. Shop has ceiling fans, fully sprinklered, ample parking, sump and high ceilings.

Built in 2019

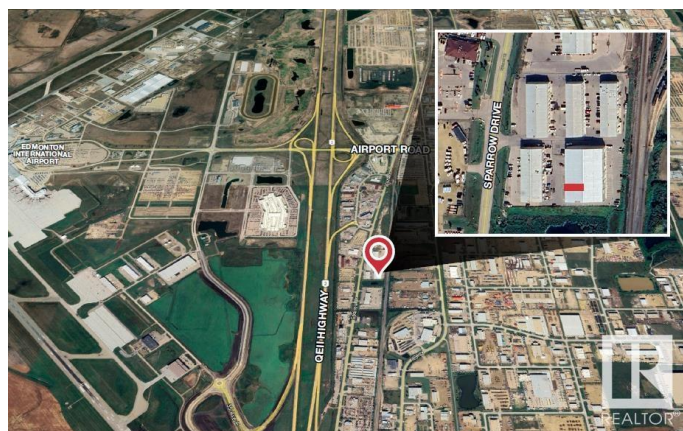
Essential Information

| | |
|------------|------------|
| MLS® # | E4421288 |
| Price | \$375,000 |
| Bathrooms | 0.00 |
| Acres | 0.00 |
| Year Built | 2019 |
| Type | Industrial |
| Status | Active |

Community Information

| | |
|-------------|------------------------|
| Address | 213 7609 Sparrow Drive |
| Area | Leduc |
| Subdivision | None |
| City | Leduc |
| County | ALBERTA |
| Province | AB |
| Postal Code | T9E 0H3 |

Exterior



| | |
|--------------|-------|
| Exterior | Mixed |
| Construction | Mixed |

Additional Information

| | |
|----------------|---------------------|
| Date Listed | February 12th, 2025 |
| Days on Market | 78 |
| Zoning | Zone 81 |

DATA IS DEEMED RELIABLE BUT IS NOT GUARANTEED ACCURATE BY THE REALTORS® ASSOCIATION OF EDMONTON. COPYRIGHT 2025 BY THE REALTORS® ASSOCIATION OF EDMONTON. ALL RIGHTS RESERVED.Trademarks are owned or controlled by the Canadian Real Estate Association (CREA) and identify real estate professionals who are members of CREA (REALTOR®, REALTORS®) and/or the quality of services they provide (MLS®, Multiple Listing Service®)

Listing information last updated on May 1st, 2025 at 6:02am MDT