

## \$0 - 12006 111 Avenue, Edmonton

MLS® #E4415910

**\$0**

0 Bedroom, 0.00 Bathroom,  
Retail on 0.00 Acres

Prince Rupert, Edmonton, AB

4,389 sq.ft. - 6,374 sq.ft. of retail space for lease on 111 Avenue. This space offers a location with high visibility, attracting over 26,400 vehicles per day. Recently renovated, the building features modern upgrades that create an atmosphere suitable for medical, professional, and retail uses. Tenants will benefit from on-site parking for clients and staff, along with easy access from 111 Avenue, and quick connections to Yellowhead Trail and Downtown Edmonton. The open-concept layout provides flexibility for various business needs, making it an ideal choice for those seeking a high-traffic, accessible location in Edmonton.

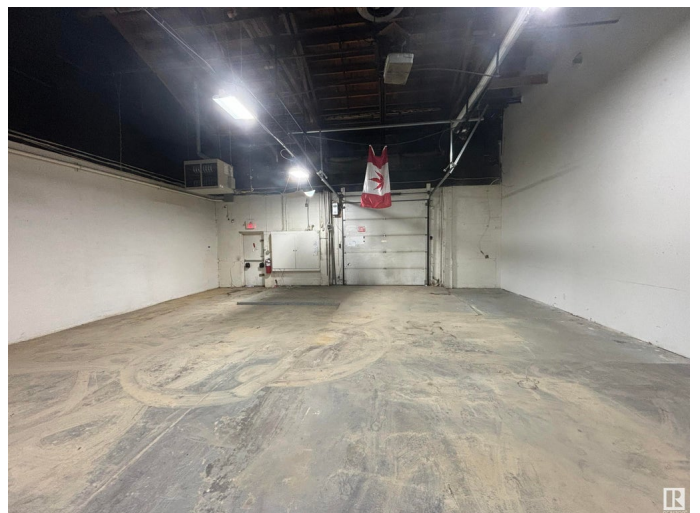
Built in 1954

### Essential Information

MLS® #	E4415910
Bathrooms	0.00
Acres	0.00
Year Built	1954
Type	Retail
Status	Active

### Community Information

Address	12006 111 Avenue
Area	Edmonton



Subdivision	Prince Rupert
City	Edmonton
County	ALBERTA
Province	AB
Postal Code	T6G 0E6

**Exterior**

Exterior	Mixed
Construction	Mixed

**Additional Information**

Date Listed	December 12th, 2024
Days on Market	187
Zoning	Zone 08

DATA IS DEEMED RELIABLE BUT IS NOT GUARANTEED ACCURATE BY THE REALTORS® ASSOCIATION OF EDMONTON. COPYRIGHT 2025 BY THE REALTORS® ASSOCIATION OF EDMONTON. ALL RIGHTS RESERVED.Trademarks are owned or controlled by the Canadian Real Estate Association (CREA) and identify real estate professionals who are members of CREA (REALTOR®, REALTORS®) and/or the quality of services they provide (MLS®, Multiple Listing Service®)

Listing information last updated on June 17th, 2025 at 9:17am MDT